

GUAM RANGE MITIGATION PLAN

September 2015

I. INTRODUCTION

Consistent with section 800.14(b)(3) of Title 36 of the Code of Federal Regulations [36 CFR § 800.14(b)(3)], National Historic Preservation Act (NHPA) Section 106 responsibilities for the Guam Relocation actions are accomplished through execution and implementation of the *Programmatic Agreement among the Department of Defense, the Advisory Council on Historic Preservation, the Guam State Historic Preservation Officer, and the Commonwealth of the Northern Mariana Islands State Historic Preservation Officer Regarding the Military relocation to the Islands of Guam and Tinian* (hereinafter “2011 PA”). Commander, Joint Region Marianas (JRM) signed the 2011 PA as the Department of Defense (DoD) representative. The 2011 PA was tailored to meet the specific needs of the proposed multi-year construction program, including flexibilities to adapt to program changes over time. The 2011 PA also included specific language regarding future consultation requirements for the new live-fire training range complex (LFTRC), including consideration of additional siting alternatives on the island of Guam.

Consistent with Stipulation V.C. of the 2011 PA, the Department of the Navy (DON) prepared a Guam Training Ranges Review and Analysis (TRRA) document and consulted with the parties to the 2011 PA (PA Parties)¹ and the public regarding potential adverse effects to historic properties associated with the proposed construction and operation of the LFTRC on Guam. The TRRA provided specific information on the location, design, orientation, and operation of the five proposed LFTRC alternatives under consideration. The DON incorporated applicable feedback into a final TRRA that was distributed on 21 July, 2015. Through the TRRA process, the DON determined that the construction and operation of each alternative would adversely affect historic properties, both directly and indirectly. Areas that would be affected directly are those areas where construction of the LFTRC would involve ground disturbance and similar effects. Areas that would be affected indirectly are those areas where operation of the LFTRC introduces auditory effects within a 65 decibels (Db) noise contour and/or access to cultural sites within the surface danger zones (SDZs) would be restricted. In addition, the TRRA determined that other cultural resources (e.g., culturally important natural resources) would also be impacted.

Consistent with Stipulation V.C.4 of the 2011 PA, this Range Mitigation Plan (RMP) stipulates measures to avoid, minimize, and mitigate adverse effects to historic properties and impacts to culturally important natural resources resulting from the construction and operation of the LFTRC alternative at Andersen Air Force Base-Northwest Field (AAFB-NWF), the alternative DON selected in the 2015 Record of Decision.

II. APPLICABILITY

This RMP applies to all construction and operations associated with the LFTRC, which includes a Multi-Purpose Machine Gun (MPMG) Range, Modified Record of Fire (MRF) Range, Known Distance (KD) Pistol

¹ For this RMP, signatories, invited signatories, and concurring parties are identified as *PA Parties* throughout this document.

Range, KD Rifle Range, Non-standard Small Arms Range, a range maintenance building, utilities improvements, roads, fences, observation towers at AAFB-NWF, Surface Danger Zones (SDZs) that overlay federal and submerged land at Ritidian Point, and a Hand Grenade (HG) range at Anderson South. Table 1 summarizes the historic properties affected and the types of actions that would generate the direct and indirect effects. Table 2 lists known medicinal plants of cultural importance in the AAFB-NWF LFTRC footprint. Appendix A depicts eligible and ineligible sites in relation to the LFTRC.

---RANGE MITIGATION PLAN (SEPTEMBER 2015)---

Table 1. Summary of Adverse Effects

GHPI Number ¹	Temporary Site Number	Site Type	Site Description	Period**	Reference	Effect Type (Action) ²	Detail of Effects
66-08-0012	T-RIT-100	Ritidian Site Complex	Latte set and latte components, caves and pictographs, Casa Real, artifact scatters	Pre-Contact/ Latte/ Spanish Administration/ Chamorro-Spanish Wars	Reinman 1977, pp. 7 – 8; Dixon <i>et al.</i> 2014a Direct Survey Report Volume I, pp. 4-43 – 4-85	Direct (Range construction); Indirect (Access, Noise)	Minimal direct effects from installation of signage and/or fencing; loss of access and possible auditory effects during range operations
66-08-0013	T-RIT-001	Ritidian Site Complex	Rock shelters, rock alignments, cave, artifact scatters	Pre-Contact/ Latte	Reinman 1977, pp. 7 – 8; Dixon <i>et al.</i> 2014b, Direct Survey Report Volume I pp. 4-43 – 4-85	Direct (Range construction); Indirect (Access, Noise)	Minimal direct effects from installation of signage and/or fencing; Loss of access and possible auditory effects during range operations
66-08-0014		Jinapsan Complex	Latte sets, rock shelters	Pre-Contact/ Latte/ Post-WWII/ Second American Territorial	Reinman 1977 pp. 8 - 10	Indirect (Noise)	Possible auditory effects during range operations
66-08-1065		Airfield	Runway, taxiway, concrete pads, artifact scatters, trash deposits	Post-WWII/ Second American Territorial	Aaron <i>et al.</i> 2007, HAER Number GU-05; Dixon <i>et al.</i> , 2011b pp. C-8 – C-35	Direct (Range construction)	No direct effects to primary features; direct effects to concrete pads, artifact scatters, housing complex
66-08-2492	T-A3-1	Rock shelter with midden soil and marine shell	Rock shelter, midden soil, marine shell	Pre-Contact/ Latte	Dixon <i>et al.</i> 2011b pp. C-399 – C-410	Direct (Range construction)	Site will be substantially, if not completely, damaged by construction
66-08-2494	T-NW-2	Ceramic scatter with midden soil	Pottery scatter, midden soil	Pre-Contact/ Latte	Dixon and Walker 2011, pp. C-289 – C-298	Direct (Range construction)	Site will be completely damaged by construction
66-08-2496	T-NW-5	Ceramic scatter	Pottery scatter	Pre-Contact/ Latte	Dixon and Walker 2011, pp. C-323 – C-331	Direct (Range construction)	Site will be substantially, if not completely, damaged by construction
66-08-2508	T-M-06	Cobble walls	Cobble walls and trail	Pre-Contact/ Latte	Dixon <i>et al.</i> 2012, p. 53	Direct (Range construction)	Site will be substantially, if not completely, damaged by construction
66-08-2522	T-RP-01	Ceramic scatter	Pottery scatter	Pre-Contact/ Latte	Dixon <i>et al.</i> 2012, p. 64	Direct (Range construction)	Site will be completely damaged by construction

---RANGE MITIGATION PLAN (SEPTEMBER 2015)---

Table 1. Summary of Adverse Effects

GHPI Number ¹	Temporary Site Number	Site Type	Site Description	Period**	Reference	Effect Type (Action) ²	Detail of Effects
66-08-2530	T-PP-01	Artifact scatter	Pottery scatter, sling stone	Pre-Contact/ Latte	Dixon <i>et al.</i> 2012, p. 66	Direct (Range construction)	Site will be substantially, if not completely, damaged by construction
66-08-2731	3	Multi-component	Pottery scatter, concrete slab, fuel tanks, bottle dump	Pre-Contact/ Latte/ Post-WWII/ Second American Territorial	Defant 2014, pp. 83 – 86	Direct (Range construction)	Site will be completely damaged by construction
	FTX3-2	Artifact scatter	Artifact scatter	Pre-Contact/ Latte	Church <i>et al.</i> 2010, pp. 96-99	Direct (Range construction)	Site will be completely damaged by construction
	T-NW-4	Ceramic scatter	Pottery scatter	Pre-Contact/ Latte	Dixon and Walker 2011, pp. C-313 – C-321	Direct (Range construction)	Site will be completely damaged by construction
	T-NW-9	Multi-component	Pottery scatter, shell adze, midden soil, bottle scatter	Pre-Contact/ Latte/ Post-WWII/ Second American Territorial	Dixon and Walker 2011, pp C-365 – C-375	Direct (Range construction)	Site will be completely damaged by construction
	T-NW-18	Ceramic scatter	Pottery scatter	Pre-Contact/ Latte	Dixon and Walker 2011, pp. C-449 – C-457	Direct (Range construction)	Site will be substantially, if not completely, damaged by construction
	T-NW-19	Ceramic scatter and midden soil	Pottery scatter, midden soil	Pre-Contact/ Latte	Dixon and Walker 2011, pp. C-459 – C-466	Direct (Range construction)	Site will be completely damaged by construction
	T-NW-20	Artifact scatter	Pottery scatter, pumice tool	Pre-Contact/ Latte	Dixon and Walker 2011, pp. C-467 – C-475	Direct (Range construction)	Site will be substantially, if not completely, damaged by construction
	T-NW-21	Ceramic scatter	Pottery scatter	Pre-Contact/ Latte	Dixon and Walker 2011, pp. C-477 – C-485	Direct (Range construction)	Site will be substantially, if not completely, damaged by construction
	T-NW-24	Ceramic scatter	Pottery scatter	Pre-Contact/ Latte	Dixon and Walker 2011, pp. C-507 – C-515	Direct (Range construction)	Site will be substantially, if not completely, damaged by construction
	T-NW-26	Ceramic scatter	Pottery scatter	Pre-Contact/ Latte	Dixon and Walker 2011, pp. C-532 – C-536	Direct (Range construction)	Site will be completely damaged by construction

Table 1. Summary of Adverse Effects

GHPI Number¹	Temporary Site Number	Site Type	Site Description	Period**	Reference	Effect Type (Action)²	Detail of Effects
	T-NW-39	Ceramic scatter	Pottery scatter	Pre-Contact/ Latte	Dixon and Walker 2011, pp. C-642 – C-645	Direct (Range construction)	Site will be substantially, if not completely, damaged by construction
	T-NW-40	Ceramic scatter	Pottery scatter	Pre-Contact/ Latte	Dixon and Walker 2011, pp. C-647 – C-656	Direct (Range construction)	Site will be completely damaged by construction

Legend:

GHPI = Guam Historic Properties Inventory.

Notes:

¹ Not all sites recorded within the project areas have received official GHPI numbers, although they have been documented as part of previous surveys.

² Access within the SDZs would be restricted during range operations.

** Revised to match Guam GHPI forms dated May 28, 2014.

References:

Aaron, D.J., D. Hart, and S.C. Baker. 2007. Historic American Engineering Record for Northwest Field, HAER No. GU-05. Prepared by Engineering-Environmental Management, Inc.

C Church, M., J. Hokanson, J. Gallison, and M. Jennings. 2010. Cultural Resources Survey of a Portion of Northwest Field, Sirena Beach, and the East Clear Zone Andersen Air Force Base, Guam. Prepared for Andersen Air Force Base, Guam. June.

DeFant, D. 2014. End of Fieldwork letter for Archaeological Survey and Testing for Selected 125 Acres, Andersen Air Force Base Main Operations Area, Island of Guam. 6 May.

Dixon, B., R. Schaefer, and T. McCurdy. 2012. Level 1 Archaeological Reconnaissance of 800 Acres within Selected Properties on Andersen Air Force Base, Guam. Volume 1: Narrative. TEC Inc., Guam, for SEARCH Inc., Honolulu.

Dixon, B. and S. Walker. 2011. Cultural Resource Investigations Conducted in the Territory of Guam Supporting the Joint Guam Build-Up Environmental Impact Statement: Final Archaeological Surveys on Guam 2009 at Proposed Utility Sites, Harmon Property, and Andersen AFB. Prepared by for Naval Facilities Engineering Command, Pacific Division, by TEC Inc.

Dixon, B., S. Walker, and R. Schaefer. 2011b. Final Report Cultural Resource Investigations Conducted in the Territory of Guam Supporting the Joint Guam Build-Up Environmental Impact Statement: Final Archaeological Surveys on Guam 2010 on Andersen AFB, Prepared by the Naval Facilities Engineering Command, Pacific Division, by TEC Inc.

Dixon, B., R. Schaefer, and T. McCurdy. 2012. Level 1 Archaeological Reconnaissance of 800 Acres within Selected Properties on Andersen Air Force Base, Guam. Volume 1: Narrative. TEC Inc., Guam, for SEARCH Inc., Honolulu.

Dixon, B., T. Rudolph, A. Jalandoni, I. Nelson, M. Hroncich-Comner, S. Leary, R. Schaefer, E. Lash, M. Todd.

2014a. Draft Report: Proposed Guam and CNMI Military Relocation 2012 Roadmap Adjustments Supplemental EIS (SEIS) Live-Fire Training Range Complex Footprints, Main Cantonment, Utilities, Communications, Well Field Alternatives and Access Routes Options Potential Direct Impact Area In-Fill Cultural Resource Study Narrative. Prepared for NAVFAC Pacific, Pearl Harbor, HI by Cardno TEC, Inc., Guam.

2014b. Draft Report: Proposed Guam and CNMI Military Relocation 2012 Roadmap Adjustments Supplemental EIS (SEIS) Live-Fire Training Range Complex Surface Danger Zones (SDZs) Alternatives Potential Indirect Impact Area In-Fill Cultural Resource Study Narrative. Prepared for NAVFAC Pacific, Pearl Harbor, HI by Cardno TEC, Inc., Guam.

2015a. Final Report: Proposed Guam and CNMI Military Relocation 2012 Roadmap Adjustments Supplemental EIS (SEIS) Live-Fire Training Range Complex Footprints, Main Cantonment, Utilities, Communications, Well Field Alternatives and Access Routes Options Potential Direct Impact Area In-Fill Cultural Resource Study Narrative. Prepared for NAVFAC Pacific, Pearl Harbor, HI by Cardno TEC, Inc., Guam.

2015b. Final Report: Proposed Guam and CNMI Military Relocation 2012 Roadmap Adjustments Supplemental EIS (SEIS) Live-Fire Training Range Complex Surface Danger Zones (SDZs) Alternatives Potential Indirect Impact Area In-Fill Cultural Resource Study Narrative. Prepared for NAVFAC Pacific, Pearl Harbor, HI by Cardno TEC, Inc., Guam.

Reinman, F. 1977. An Archaeological Survey and Preliminary Test Excavations on the Island of Guam, Mariana Islands, 1965-1966. Miscellaneous Publications No.1. Micronesian Area Research Center, University of Guam, Mangilao.

---RANGE MITIGATION PLAN (SEPTEMBER 2015)---

Table 2. Known Medicinal Plants in the AAFB-NWF LFTRC Footprint	
Species*	Chamorro Name*
<i>Aidia cochinchinensis</i>	Sumak
<i>Asplenium nidus</i>	Galak fedda', bird's nest fern
<i>Barringtonia asiatica</i>	Putting, puting, Fish-kill Tree
<i>Caesalpinia major</i>	Pakao, akangkang
<i>Caesalpinia sappan</i>	Sibukao
<i>Capsicum spp.</i>	Doni
<i>Carica papaya</i>	Papayan lahi
<i>Casuarina equisetifolia</i>	Gagu, ironwood
<i>Chromolaena odorata</i>	Masiksik
<i>Clerodendrum inerme</i>	Lodugao
<i>Cocos nucifera</i>	Niyok, coconut
<i>Crataeva speciosa</i>	Amot haga
<i>Cycas micronesica</i>	Fadang, cycad
<i>Davallia solida</i>	Pugua machena
<i>Eclipta prostrata</i>	Titimu
<i>Elatostema calcareum</i>	Tapun ayuyu
<i>Entada phaseoloides</i>	Bayoggon, dangkulu
<i>Eugenia palumbis</i>	Agate lang, Agatelang
<i>Ficus prolixa</i>	Nunu, banyan
<i>Guettarda speciosa</i>	Panao, zebrawood
<i>Hedyotis foetida</i>	Paudedo
<i>Hedyotis spp.</i>	Pao de'do lahi
<i>Hibiscus tiliaceus</i>	Pago, beach or sea hibiscus
<i>Jatropha curcas</i>	Tuba tuba
<i>Macaranga thompsonii</i>	Pengua
<i>Mammea odorata</i>	Chopak
<i>Maytenus thompsonii</i>	Luluhut, lulujut
<i>Melanolepis multiglandulosa</i>	Alom, alum
<i>Microsorium punctatum</i>	Galak dikike'
<i>Mikania scandens</i>	Mile-a-minute
<i>Morinda citrifolia</i>	Lada, noni
<i>Peperomia mariannensis</i>	Potpuput
<i>Phyllanthus debilis</i>	Maigo-lalo, maigu-lalo
<i>Phymatodes scolopendria</i>	Kahlao
<i>Piper guahamense</i>	Pupulun aniti
<i>Pipturus argenteus</i> \	Atmagayan, amahadyan
<i>Polypodium scolopendria</i>	Kahlao
<i>Premna obtusifolia</i>	Ahgao, false elder
<i>Psychotria marianna</i>	Aplokating, aploghating
<i>Stachytarpheta jamaicensis</i>	Katson

Sources: DON. 2010. *Final Environmental Impact Statement. Guam and CNMI Military Relocation - Relocating Marines from Okinawa, Visiting Aircraft Carrier Berthing, and Army Air and Missile Defense Task Force.* Joint Guam Program Office. July.

*Corrections of some names were provided by Mike Gawel of National Park Service on September 11, 2015.

III. MITIGATION OF DIRECT EFFECTS

Range construction activities (grading, filling, utilities trenches) will result in direct adverse effects to historic properties and culturally important natural resources for the LFTRC. All of the historic properties subject to direct adverse effects are archaeological sites (see Table 1). Effects will vary in degree from destruction of a single feature within an archaeological site to destruction of the entire site. During initial design, DON made every attempt to avoid or minimize direct adverse effects to identified sites; further minor adjustments may be possible as DON completes the detailed range design. When adverse effects are unavoidable, the following measures will apply:

- A. The DON will adhere to the Secretary of Interior (SOI) Standards and Guidelines for the Treatment of Historic Properties.
- B. The DON will follow the provisions of Stipulation VI.A-C of the 2011 PA to mitigate direct effects from construction and operation of the LFTRC.
 1. Archaeological Sites: The provisions include data recovery of directly affected archaeological resources sufficient to characterize the nature and probable age of the deposits; document stratigraphy; and recover appropriate samples for answering research questions presented in a research design that is consulted on with SHPO. Data recovery will be conducted in accordance with a data recovery plan.² Per ACHP guidance³, data recovery and analysis will be accomplished in a thorough, efficient manner, using the most cost-effective techniques practicable. Results of the archaeological data recovery investigations will be provided to the Guam State Historic Preservation Office (SHPO) in the form of technical reports. In addition to the technical reports, the DON will prepare a consolidated information package to present the findings to the public.
 2. Culturally Important Natural Resources: Prior to vegetation clearing activities associated with construction of the LFTRC, the DON will coordinate with the PA Parties to contact cultural practitioners and provide them an opportunity to safely collect culturally important natural resources, consistent with applicable DON and installation security instructions, and other safety related guidelines.
 - a. All measures involving culturally important natural resources will be conducted in compliance with the 2015 Biological Opinion that the USFWS issued to the DON under section 7 of the Endangered Species Act and the JRM Integrated Natural Resources Management Plan.
 - b. The DON will include in cultural interpretation and education materials information about culturally important natural resources and traditional uses in the area.
- C. The DON will follow Guam law for treatment of human remains and associated grave goods, as specified in Appendix G of the 2011 PA.

² In preparation for data recovery investigations, the archaeological contractor will coordinate with the munitions and explosives of concern (MEC) contractor to conduct MEC survey of the subject site(s) and mark anomalies. Anomaly avoidance during data recovery investigations is the preferred option. If the presence of the anomaly prohibits completion of mitigation sufficient to address research topics proposed for the site, it may be necessary to suspend data recovery efforts pending examination of the anomaly by the MEC contractor.

³ <http://www.achp.gov/archguide.html>.

IV. MITIGATION OF INDIRECT EFFECTS

As noted in Table 1, the proposed undertaking will indirectly adversely affect a number of historic properties. Indirect effects include restriction of access to historic properties that lie within the SDZs, and potential auditory effects from weapons firing.

- A. Mitigation measures to address access restrictions include the commitment to coordinate with U.S. Fish and Wildlife Service (USFWS) to facilitate and accommodate public access, as well as academic research and education when the LFTRC is not in operation. Any decision regarding the relocation of the USFWS facilities and/or construction of an external access road are dependent upon the outcome of consultations under section 7 of the Endangered Species Act (ESA) and negotiation of the agreement authorized by section 2822 of the Fiscal Year 2015 (FY15) National Defense Authorization Act (NDAA). Stipulation VIII of this RMP provides additional details on access planning.
- B. Mitigation for auditory impacts associated with weapons firing is incorporated in the siting and design of the LFTRC. Approximately 300 linear feet (ft) of dense vegetation will be retained at the closest location between the firing range and the sensitive historic properties in the SDZs. Additionally, there is a natural change in elevation of approximately 500 ft from the location of the noise sources at the ranges to the sensitive historic properties below the cliffs. Together, these measures will substantially mitigate the indirect auditory effects of range operations.

V. ASSESSMENT OF POSSIBLE LOCATION ASSOCIATED WITH CHAMORRO LEGEND WITHIN THE LFTRC

During consultation on this RMP, the PA Parties recognized that the legendary Patgan Point, or Child's Point site may be located within the LFTRC. The DON and the PA Parties will coordinate research and investigations to assess the possibility that the legendary footprint of Taga is in the area, with the intention to assess its possible presence within 60 days of executing this RMP.

If the location is confirmed as being within the LFTRC, the DON will ensure the following measures are carried out:

- A. Coordinate with the PA Parties to identify appropriate alternatives to avoid, minimize or mitigate effects.
- B. Incorporate the site in access planning.
- C. Support consultation with the PA Parties and the public to evaluate the possibility that the legendary site may qualify as a Traditional Cultural Property.
- D. Include information about the legend and the location in cultural interpretation and education materials.

VI. DESIGN REVIEW

- A. The DON will provide an opportunity for design review of the LFTRC to the Guam SHPO. The purpose of the review is to confirm that the project's effects to historic properties are consistent with the information in the Final TRRA and that the project is implementing appropriate mitigation measures in accordance with the RMP. There will be no design review for the HG range at Andersen South because there are no historic properties located in the areas directly or indirectly affected under the proposed HG Range.

---RANGE MITIGATION PLAN (SEPTEMBER 2015)---

- B. Excerpts of project preliminary design documents (e.g. draft Design-Build Request for Proposal package or Design-Bid-Build 30% design drawings or similar) will be provided to the Guam SHPO for review.
- C. The DON will consider comments received within 45 days of delivering preliminary design documents.
- D. The DON will provide Guam SHPO a 14-day review of 60% design submittals [Note: Design-Build projects allow the contractor to separate 60% design submittals as desired (e.g. 60% grading plan only, 60% utilities design drawings only)].
- E. The PA Parties will be able to review the pertinent design submittals at the Guam SHPO office premises, within the designated timelines for each review period.
- F. Due to acquisition sensitive information of the design submittals, the PA Parties accessing and reviewing the documents will be required to sign Non-Disclosure Agreement and No Conflict of Interest statements.

VII. PREPARATORY CONSTRUCTION ACTIVITIES

- A. Preparatory construction activities (conducted in advance of LFTRC construction) include intrusive design studies (e.g., geotechnical studies) and ground-disturbing removal, or clearance, of Munitions of Explosive Concern (MEC) conducted.
- B. Upon execution of this RMP, the DON will identify portions of the direct effects area that have been surveyed with negative results (e.g., no historic properties identified), in order to allow preparatory construction activities to begin in those areas.
- C. The DON archaeologist shall maintain oversight, with active, onsite spot monitoring of preparatory construction activities, to ensure avoidance of known historic properties and to account for the potential for inadvertent discovery of previously unknown historic properties. Any inadvertent discoveries will be treated in accordance with Stipulation XI, Discoveries and Emergencies, of the 2011 PA.

VIII. CULTURAL ACCESS

- A. Among the sixty historic properties that have been identified within the area indirectly affected by the LFTRC, portions of two historic properties would be subject to access restriction while the ranges are in use. Given that these sites are located within the Ritidian Unit of the Guam National Wildlife Refuge, DON will coordinate with the USFWS to facilitate public access when the ranges are not in operation.
- B. In areas where range construction requires vegetation clearing, cultural practitioners may be afforded access to portions of NWF and Ritidian Unit to safely collect culturally important natural resources, subject to applicable DON and installation security instructions, and other safety related guidelines.
 - 1. All measures involving culturally important natural resources will be conducted in compliance with the 2015 Biological Opinion that the USFWS issued to the DON under section 7 of the Endangered Species Act and the JRM Integrated Natural Resources Management Plan.
- C. Access to other lands controlled by Commander, JRM would be consistent with the JRM Public Access Plan.
- D. DON will coordinate with the USFWS to facilitate access for academic research and educational visits within the Ritidian Unit when the ranges are not in operation.

Archaeological research will be subject to the provisions of the Archeological Resources Protection Act.

IX. PERIODIC MEASURES

- A. For the first two years of the LFTRC operations the DON will conduct, as detailed in the monitoring plan in Appendix B of this RMP, annual inspections of the condition of representative historic properties located in the LFTRC. DON will report, as appropriate, the results in the 2011 PA Semi Annual Reports.
- B. The DON will, in coordination with the PA Parties, review and update the inspection and reporting requirements based on the results of the first two years.

X. DISCOVERIES AND EMERGENCIES

Any inadvertent discoveries and emergencies would be addressed in accordance with Stipulation XI, Discoveries and Emergencies, of the 2011 PA. The DON SHPO Liaison and/or DON Archaeologist will make direct contact with Guam SHPO and the ACHP as promptly as possible to identify the emergency situation and coordinate closely to avoid, minimize, and mitigate adverse effects. To the degree possible within project constraints and in consideration of the need to protect vulnerable resources, the DON will take available steps to afford additional time, not to exceed a total of five working days, for SHPO review.

XI. RANGE MITIGATION PLAN REVIEW

Accomplishments, planned efforts, and discussions of issues related to the execution of the RMP shall be documented and reported as part of the semi-annual reports and annual workshop reporting described under Stipulation XII of the 2011 PA.

XII. RESOLVING OBJECTIONS

Should a Signatory to the RMP object to actions carried out or proposed with respect to the implementation of the RMP, procedures described under Stipulation XIII of the 2011 PA will be followed to resolve any potential objections.

XIII. CURATION

Curation of archaeological collections generated as a result of studies completed under this RMP will follow Stipulation X A-C of the 2011 PA.

XIV. RANGE MITIGATION PLAN AMENDMENT

Amendments to the RMP will follow the process in Stipulation XIV of the 2011 PA.

XV. TERMINATION

Termination of the RMP will follow the process in Stipulation XV of the 2011 PA.

XVI. ANTI-DEFICIENCY ACT

The DON's obligations under this RMP are subject to the availability of appropriated funds. Nothing herein shall constitute nor be considered to constitute an obligation or expenditure of funds in advance of or in excess of a proper appropriation by Congress of the United States or otherwise be in violation of the Anti-Deficiency Act, 31 U.S.C. § 1341 et seq. The DON will make reasonable and good faith efforts to secure the necessary funds to implement this RMP in its entirety. If compliance with the Anti-Deficiency Act alters or impairs the DON's ability to implement the stipulations of this RMP, the DON will consult in accordance with the amendment and termination procedures found at Stipulations XIV and XV of the 2011 PA.

XVII. EXECUTION

Execution of the RMP will follow the process in Stipulation V.C.4 of the 2011 PA.

EXECUTION AND IMPLEMENTATION of this Range Mitigation Plan evidences DoD conformance with Stipulation V.C.4 of the 2011 PA. The RMP has been prepared in consultation with the Signatories (Guam State Historic Preservation Officer and Advisory Council on Historic Preservation), Invited Signatories (Federal Highway Administration and National Park Service) and Concurring Parties (Department of Chamorro Affairs and Guam Preservation Trust), in order to develop measures to avoid, minimize, and mitigate adverse effects to historic properties and impacts to culturally important natural resources resulting from the construction and operation of the live-fire training range complex at Andersen Air Force Base-Northwest Field.

Each of the undersigned Signatories certifies that they have full authority to bind the party that they represent for purposes of entering into this mitigation plan.

LIST OF SIGNATORIES

For the Department of Defense, Joint Region Marianas, United States Navy
Rear Admiral Babette "Bette" Bolivar

For the United States Marine Corps
Craig B. Whelden, Executive Director, Marine Corps Forces Pacific

For the Advisory Council on Historic Preservation
John M. Fowler, Executive Director

For the Guam State Historic Preservation Office
Lynda Bordallo Aguon, State Historic Preservation Officer

SIGNATORY

FOR THE DEPARTMENT OF DEFENSE REPRESENTATIVE
JOINT REGION MARIANAS/UNITED STATES NAVY

By: _____ Date: _____

Babette "Bette" Bolivar
Rear Admiral, United States Navy
Department of Defense Representative Guam, Commonwealth of the Northern Mariana Islands,
Federated State of Micronesia and Republic of Palau;
Commander, Joint Region Marianas

SIGNATORY

FOR THE UNITED STATES MARINE CORPS

By: _____ Date: _____

Craig B. Whelden
Executive Director
Marine Corps Forces Pacific

SIGNATORY

FOR THE ADVISORY COUNCIL ON HISTORIC PRESERVATION

By: _____ Date: _____

John M. Fowler
Executive Director

SIGNATORY

FOR THE GUAM STATE HISTORIC PRESERVATION OFFICE

By: _____ Date: _____

Lynda Bordallo Aguon
State Historic Preservation Officer
Guam Department of Parks and Recreation

INVITED SIGNATORY

FOR THE UNITED STATES ARMY

By: _____ Date: _____

Eric Sanchez
Brigadier General, United States Army
Commanding General, 94th Army Air & Missile Defense Command
United States Army Pacific

INVITED SIGNATORY

FOR THE NATIONAL PARK SERVICE

By: _____ Date: _____

Martha Lee
Acting Regional Director, Pacific West Region
National Park Service

INVITED SIGNATORY

FOR THE DEPARTMENT OF TRANSPORTATION

By: _____ Date: _____

Mayela Sosa
Division Administrator
Federal Highway Administration, Hawaii Division

CONCURRING PARTY

FOR THE DEPARTMENT OF CHAMORRO AFFAIRS

By: _____ Date: _____

Joseph Cameron
President

CONCURRING PARTY

FOR THE GUAM PRESERVATION TRUST

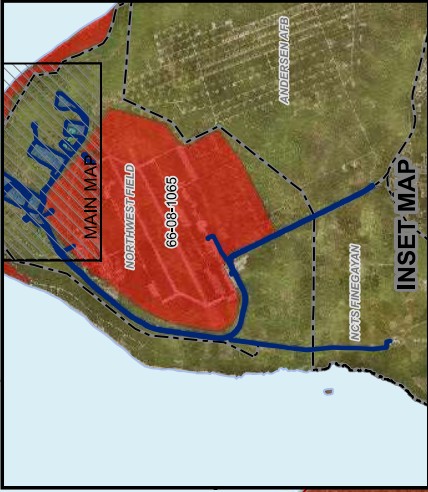
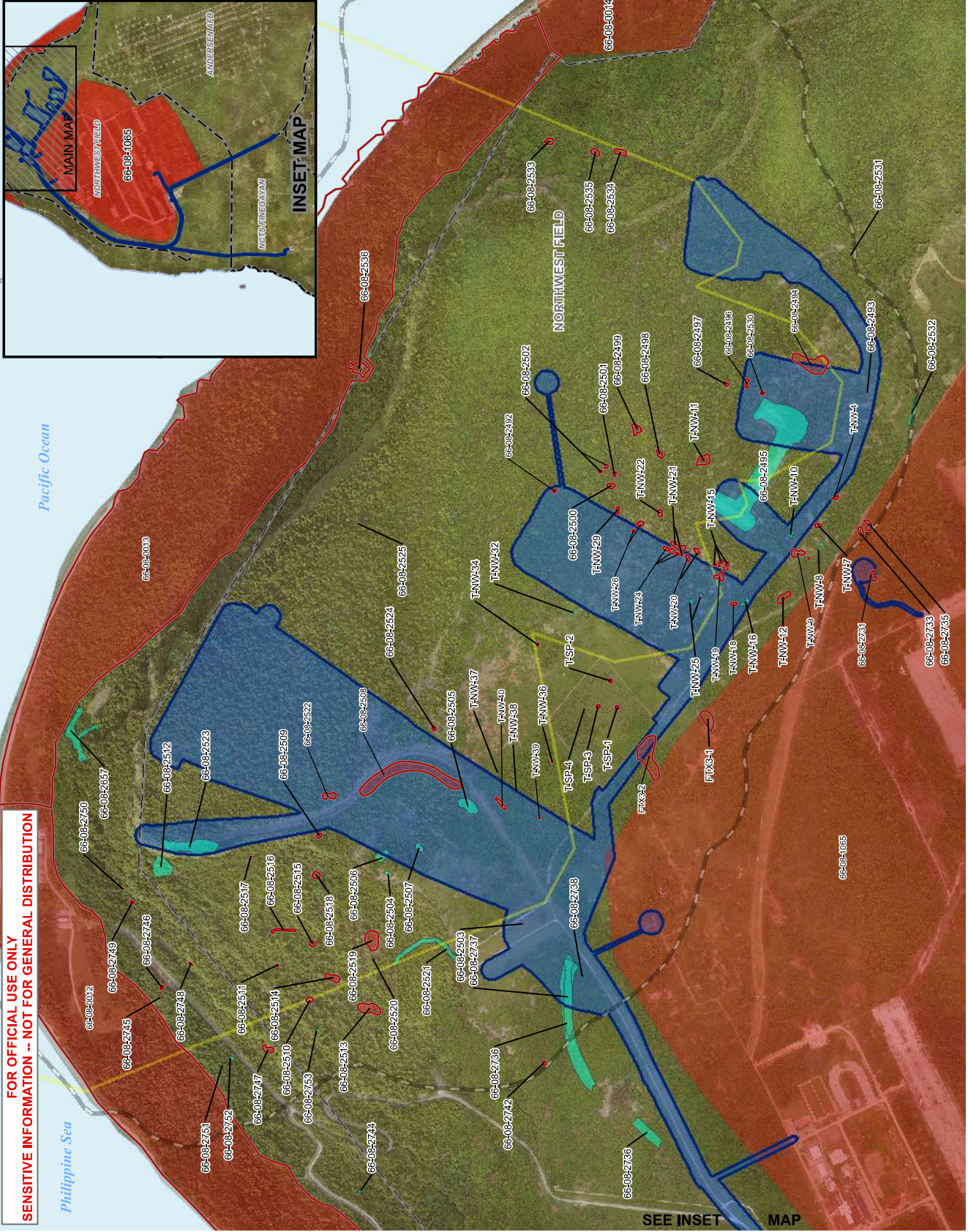
By: _____ Date: _____

Joe Quinata
Chief Program Officer

APPENDIX A. Eligible and Ineligible Sites in Relation to the LFTRC.

This page left intentionally blank.

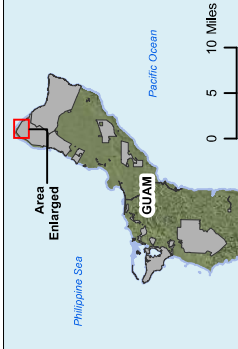
FOR OFFICIAL USE ONLY
SENSITIVE INFORMATION -- NOT FOR GENERAL DISTRIBUTION



AAFB-NWF LFTRC

Legend

- DOD Boundary
- LFTRC Ranges - Potential Direct Impact Area
- LFTRC Ranges - Potential Indirect Impact Area
- Potential Noise Impact - 65db or greater
- Archeological Site NRHP Eligibility**
- Cultural Resource Sites - Eligible
- Cultural Resource Sites - Not Eligible



Coordinate System: UTM Zone 55 North
 Projection: Transverse Mercator
 Datum: D WGS 1984

0 200 400 600 800 1,000
 FEET

0 100 200 300 400
 METERS

PREPARED BY:
NAVFAC
 Naval Facilities Engineering Command
 Guam Program Management Office

FOR OFFICIAL USE ONLY
 DATE: 11 Sep 2015

This report contains information that is unclassified, but its disclosure could be injurious to the national defense. It is to be controlled, stored, handled, transmitted, disseminated, published, or exhibited in any manner that could result in unauthorized disclosure of its contents to the public without the written consent of the Guam Program Management Office.

This page left intentionally blank.

APPENDIX B. Periodic Inspection Plan

This page left intentionally blank.

The Periodic Inspection Plan addresses the identification of key sites, inspection, and reporting on measures to confirm the status of representative cultural sites within the live-fire training range complex (LFTRC) during of construction and operation of the ranges.

I. Purpose of inspections

- a. Onsite Inspections will examine representative locations and resources to assess the following:
 - i. Physical damage due to inadvertent, unauthorized traffic and ground disturbance, illegal removal of artifacts, etc.
 - ii. Physical damage from auditory effects of LFTRC operations.
 - iii. Environmental damage (erosion, vegetation damage, etc.).

II. Proposed sites for periodic inspections

- a. Ritidian complex sites (0012, 0013, 0014): the most sensitive areas within the complex sites are caves with pictographs and latte sets. Portions of the sites are on U.S. Fish and Wildlife land and private property.
- b. Artifact scatters near construction areas: potential physical damage due to construction and operation – will select representative samples, based on site type, potential for buried features, including burials. Artifact scatters vary from surface scatters on shallow soil, possibly to scatters indicating more intensive use; soil depth will be a factor in selection.
- c. Rock shelters vary from small overhangs where pots were cached, possibly to shelters large enough for people to shelter in, maybe have fires, etc. Larger shelters would have priority for inspecting as they are more likely to attract “visitors.”

III. Inspection schedule

- a. Baseline inspection prior to construction (document condition, photos, document observations, identify key features to be inspected).
- b. After construction but before range is operational.
- c. Annually for the first two years of range operations, when accessible to inspectors.
- d. Annual inspection reports to be included with July-December semi-annual report for the 2011 PA.

IV. Reporting

- a. Report comparison of current observation to baseline conditions.
- b. Report proposes mitigations of any observed effects:
 - i. Minor effects that can be corrected by modifying use pattern by providing instructions to range users.
 - ii. Damage attributed to natural causes or human causes not related to range operation.
 - iii. Damage due to unanticipated effects of range usage, data recovery as a last resort.
- c. Report goes to signatories with 45 day comment period.

V. Consultation

- a. Guam State Historic Preservation Office (SHPO) and the PA Parties will be invited to accompany the Department of the Navy (DON) staff during site visits.
- b. DON will notify Guam SHPO immediately if unanticipated adverse effects, not identified in the Range Mitigation Plan, are found.
- c. The parties to the 2011 Programmatic Agreement will review results and the periodic inspection plan during annual workshops.